



HEARTWOOD
HOMES

Eastfield Court, AL4 9JL

Offers Over £450,000

🛏️ 2 🚿 1 🚗 1

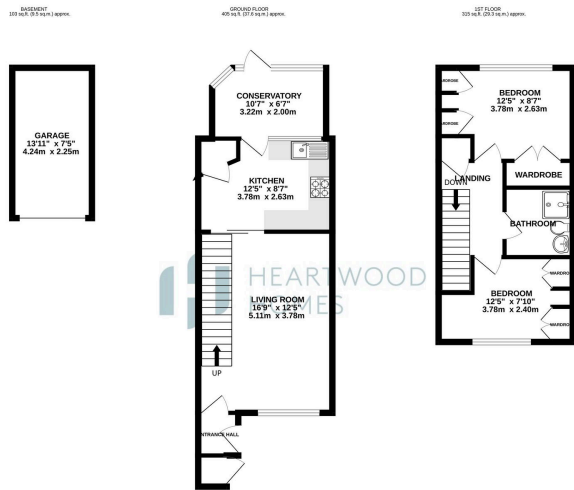


This delightful home is situated in a serene cul-de-sac in the highly sought-after Jersey Farm area. Perfect for families, the property offers a peaceful and tranquil setting while still being conveniently close to local amenities, parks, and highly regarded schools, making it an ideal location for modern family living.

The property offers well-proportioned accommodation, starting with a welcoming canopy porch. This leads into a spacious living/dining room, perfect for relaxing or entertaining. At the rear, you'll find a fantastic kitchen that opens up to the bright and airy conservatory, creating a seamless indoor-outdoor flow. On the first floor, there are two generously sized bedrooms and an attractive modern bathroom, providing comfortable living spaces for a growing family or professional couple.

Externally, the property features a well-groomed front garden that enhances its curb appeal. At the rear, there is a landscaped garden with convenient work shop/ man cave. The property has the added benefit of a garage en bloc and two allocated parking spaces.





TOTAL FLOOR AREA: 823 sq ft (76.5 sq m) approx.

- Two double bedroom home
- Parking & Garage
- Quiet cul-de-sac location
- Close to sought after outstanding schools
- Desirable Jersey Farm location
- Local amenities close by
- Motivated vendor
- EPC C

